

# Ford 250-450 Installation Instructions



**Kit Contents:**

- (2) Hitch Bar™ Lights (Left & Right)
- (2) Stainless Bolt, Lock Nuts, & Washers
- (1) 25' 2-Output Power Harness
- (2) Optional Rubber Shims

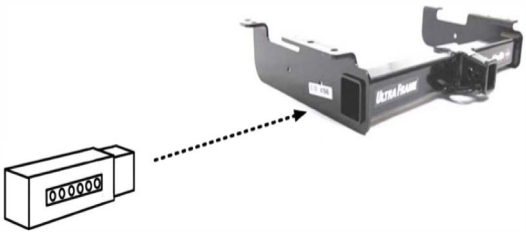
Tech Support: (847) 327-0073 ext. 3

## STEP 1

### DETERMINE LEFT FROM RIGHT LIGHT BAR

SIDE LIGHTS WILL BE FACING DOWN IF YOU HAVE THEM IN THE PROPER ORIENTATION.

### INSERT 1 LIGHT BAR INTO EACH HE END OF THE HITCH FRAME



## STEP 2

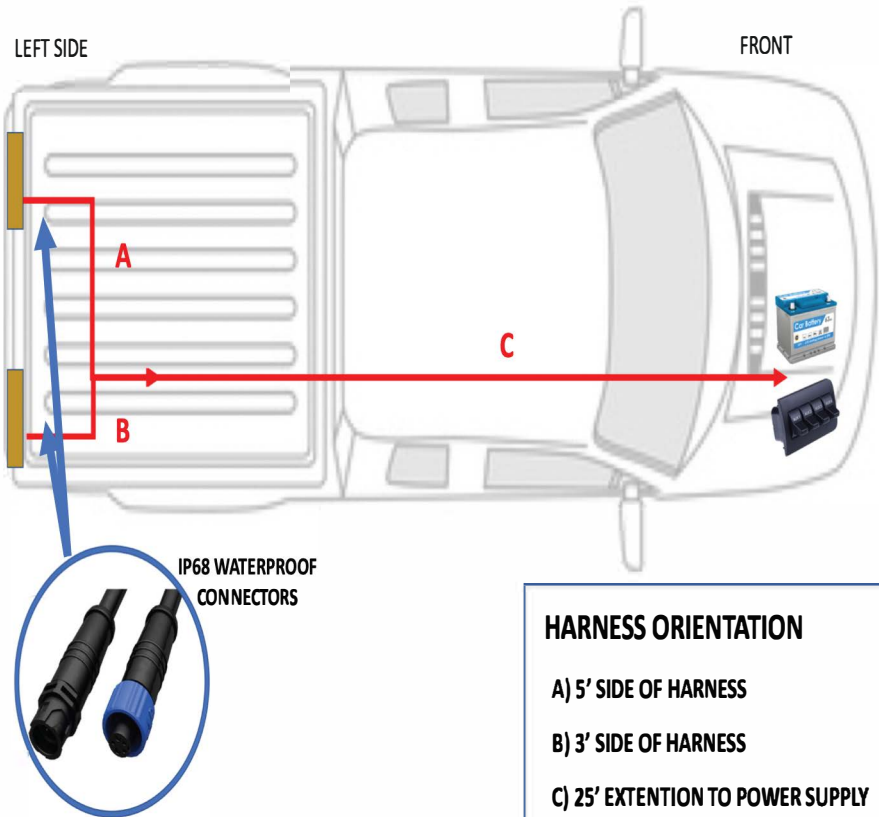
### USING THE SUPPLIED HARDWARE

- INSERT 1 BOLT THROUGH THE HOLE IN THE SIDE OF THE HITCH FRAME WITH A WASHER
- SECURE ON THE INSIDE OF THE HITCH FRAME WITH WASHER AND LOCKING NUT.
- LOOSELY TIGHTEN, CHECK ALIGNMENT OF LIGHT BARS, ADJUST IF NEEDED
- FULLY TIGHTEN LOCKING NUT.

**\*\*LAST CHANCE TO CHECK THAT THE SIDE LIGHTS ARE FACING DOWN AND YOU HAVE THEM IN THE PROPER ORIENTATION PRIOR TO SECURING**

# STEP 3 – HARNESS INSTALLATION

- A. STARTING AT THE PASSENGER REAR CORNER LAY OUT YOUR HARNESS SO THAT THE LONG SIDE (A) OF THE HARNESS IS FACING THE LEFT SIDE
- B. ROUTE THE (A) SIDE OF THE HARNESS OVER THE TRAILER HITCH TO THE LEFT HITCH BAR
- C. ROUTE THE (B) SIDE OF THE HARNESS TO THE RIGHT SIDE HITCH BAR
- D. SECURE BY INSERTING AND TWISTING THE IP68 WATERPROOF CONNECTORS TO EACH HITCH BAR
- E. ROUTE THE ( C ) SIDE OF HARNESS ALONG PASSENGER SIDE FRAME RAIL TO POWER SOURCE OR SWITCH
- F. GO BACK THROUGH YOUR WIRING AND SECURE WIRES AS NEEDED. ENSURE HARNESS DOES NOT CONTACT ANY MOVING OR HOT PARTS OF THE TRUCK
- G. HOOK UP YOUR POWER SUPPLY TO THE END OF ( C )
- H. ADJUST HITCH BARS AS NEEDED TO OPTIMAL COVERAGE



## INSTALL TIPS:

Ford Uses different thickness tubing on F250 / F350 while keeping the outside diameter the same.

To accommodate the variance in the design by Ford, we designed our Hitch Bars™ to fit both models.



You may find that the Hitch Bar™ has some play once installed into the Hitch. To resolve this and tighten up the fitment of before bolting it in, Please see the following procedure.

It may be necessary to double up the Rubber shims to take up the play in the Bar.

- 1) Remove included Rubber Shims from the parts bag.
- 2) Remove the hitch bar and place a rubber shim at the top of the hitch bar ("X") that inserts into the hitch



- 3) With the Rubber Shim on top, reinsert the Hitch Bar into the hitch. Ensure that the rubber slides into the Hitch along with the Hitch Bar.

( TIP: If the rubber shim doesn't seem to slide well or is binding to the Hitch Bar while inserting into the hitch, wipe the rubber shims with a slippery solution like Tire shine or Armor All to allow it to slide easier)

- 1) Once inserted and Flush with the hitch, Use a razor knife to cut away the remaining rubber shim, then install bolt and secure the Hitch Bar in place.

